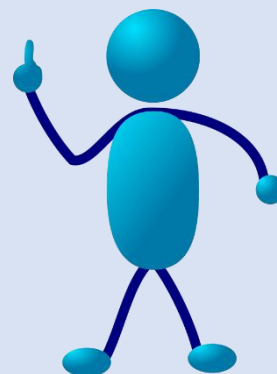


# The Impact of COVID on Young People with SEND.

Would you like to be part of a study and tell a researcher about your COVID experiences? Good or bad!



Are you a young person aged 14 – 25 with a special educational need or disability? Were you in education during the pandemic? I would like to hear from you!



## What will happen?

You will be asked about your experiences during COVID and the lockdowns and afterwards and how it affected you.

It can be online or in person.

You can meet me before we chat about the study for you to ask questions.

I would also like to talk to you if you are a parent carer of a young person in this group.

If you are interested, then please contact me  
on: [jmp54@kent.ac.uk](mailto:jmp54@kent.ac.uk)



Or text or What's App 07734 002717 (work phone)