

16.00-17.30: Challenging Moralities: the Thin Line Between Scandal and Provocation

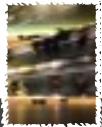
· *Laura Owen* (University of London Inst. in Paris),
The Route to Excess: Re-Situating Laure

· *Sarah St. John* (University of Kent),
Cocteau's *Parade*: the Scandalous Ballet with a Mask of Ambiguity

· *Elaine Morley* (University of Kent),
Morality and Ambiguity in the Writings of Iris Murdoch and Elias Canetti

17.30-18.30: Roundtable

18.30-19.00: Closing remarks



Photographic Exhibition
Inauguration: 22nd May 2009,
9:30AM

Virginia Woolf College, Main Hall
University of Kent at Canterbury



Photo by Bryony Pierce



AMBIGUITIES
DESTABILISING PRECONCEPTIONS

Skepsi's Second Annual Graduate Conference
and
Photographic Exhibition

<http://www.kent.ac.uk/secl/journals/skepsi/events.html>
ambiguities2009@kent.ac.uk

22nd-23rd May 2009,
Virginia Woolf College, Seminar Room 6
University of Kent at Canterbury

Friday 22nd May 2009

9.00-9.30: Registration

9.30-10.00: Welcome

10.00-12.00: Ambiguous Genders

· *Kate Nelson Best* (King's College, London),
An Ambiguous Sartorial Phallus: the
Multiplicity of Meaning Surrounding the
Figure of *La Parisienne*

· *Marianna Orsi* (Università degli Studi di Pisa),
Monstra Tassiani: Monsters in Torquato
Tasso's *Gerusalemme Liberata*

· *Claire Humphrey* (University of Manchester),
The Ambiguity of Feminine Subjectivity in
the Paris *banlieues*

· *Elodie Vignon* (Sorbonne Nouvelle, Paris),
Patient-doctor relationships in *The
Compassion Protocol* by Hervé Guibert

12.00-13.30: Lunch

13.30-15.00: Ambiguous Arts: Institutions and Audiences

· *Connel Vaughan* (University College Dublin),
Ambiguous Exhibitions, Ambiguous
Institutions

· *Yaël Kreplak* (ENS-LSH, Lyon),
Talking About Art: Suggestions for a
Situated Approach of Ambiguity as a
Linguistic Phenomenon

· *Martine Rouleau* (London Consortium),
Rules of Engagement Unknown: Cildo
Meireles at Tate Modern

15.00-15.30: Coffee Break

15.30-17.00: Taking Off the Mask: Disturbing Investigations of Unreliable Human Minds

· *Jean Baptiste Chantoiseau* (Sorbonne Nouvelle, Paris),
Deep Inside Madness - The Materialisation of
Schizophrenia in David Lynch's aesthetics
(*Lost Highway, Mulholland Drive, Inland
Empire*)

· *Kamila Pawlikowska* (University of Kent),
What's behind the face?

Saturday 23rd May 2009

9.15-11.15: Ambiguous Authority

· *Roger Duck* (University of London),
Ambiguity in Revolutionary French Local
Government. The Example of the Bas-
Languedoc

· *Tom Grimwood* (Lancaster University),
Irony, Interpretation, Authority

· *Andras Szalai* (Central European University),
Coping with the Security Dilemma - a
Fundamental Ambiguity of State Behavior

· *David Lewin* (University of Kent),
'They Know not What They Do': the
Ambiguity of Technological Agency

11.15-11.30: Coffee Break

11.30-12.30: Visual Ambiguity

· *Gavin Maughfling* (University of Hertfordshire),
Sliding Gestures: Ambiguity of Meaning
and Intent in Visual Practice

· *Justyna Stepien* (University of Lodz),
Visual Ambiguity in Pop Art Collage

12.30-14.00: Lunch

14.00-15.30: Authors and Ambiguous Languages: the Struggle of Conveying Meanings

· *Megan Entecott* (University of Kent),
The Role of Language in *A Clockwork
Orange*

· *Harriet Clements* (University of Kent),
To what extent is Hofmannsthal's
Sprachskepsis determined by his genre?

· *Duane Williams* (University of Kent),
Where a Silence is Said: the Ambiguities
of Apophanticism

15.30-16.00: Coffee Break