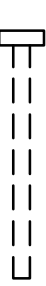



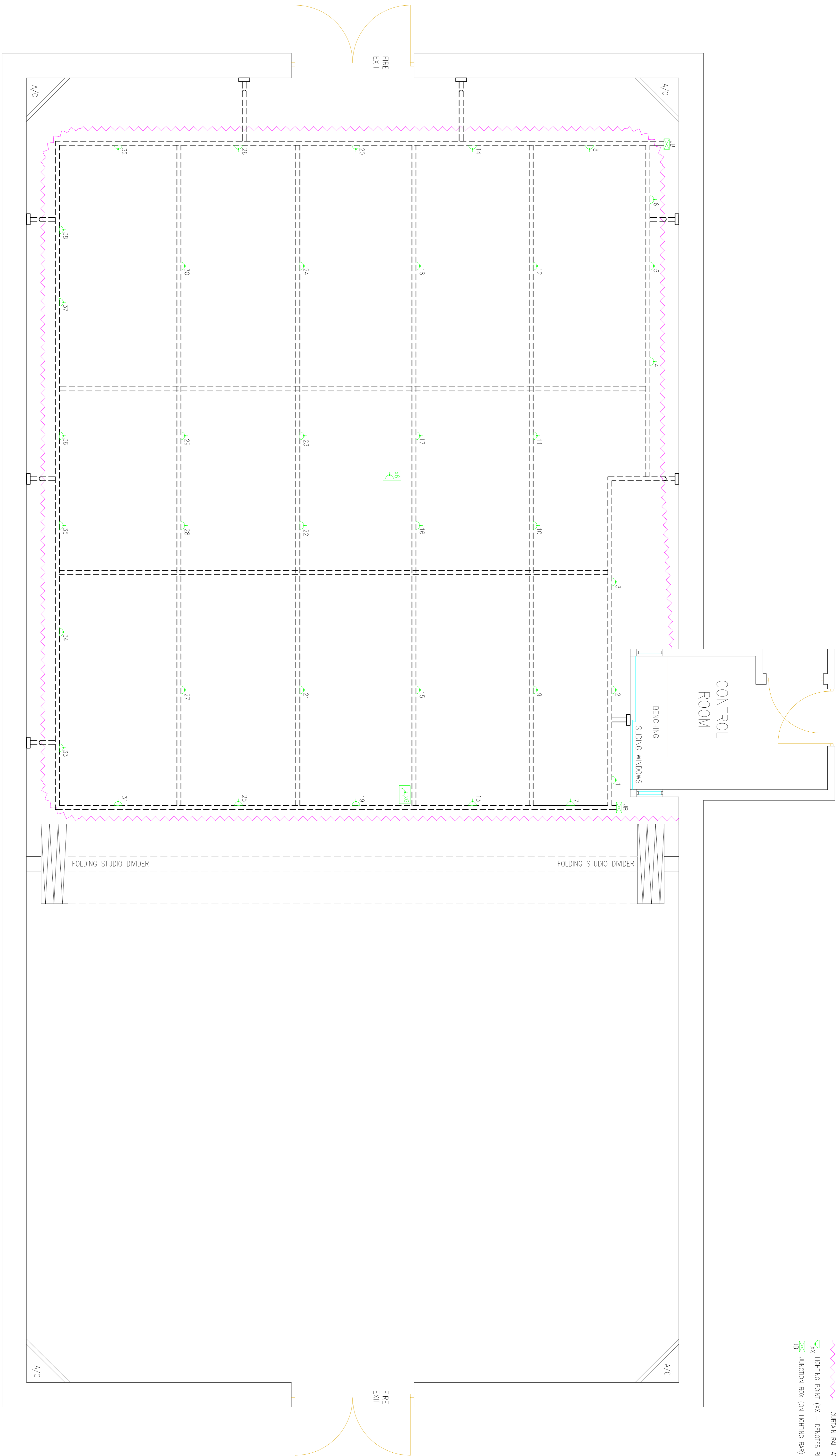


- KEY:
-  LIGHTING BAR AT H/L
 -  CURTAIN RAIL AT H/L
 -  LIGHTING POINT (XX - DENOTES REF NO.)
 -  JUNCTION BOX (ON LIGHTING BAR)



ALL LIGHTING BARS
@ 4525 ABOVE FLOOR LEVEL



LUMLEY
DRAMA STUDIOS

School of Arts
University of Kent
Kent
CT2 7UG
Tel 01227 827941
E-mail dm@kent.ac.uk
www.kent.ac.uk

DRAWING TITLE:
LUMLEY DRAMA STUDIO
HIGH LEVEL PLAN

SCALE: 1:25 @A1
DRAWN BY: DDW
DATE: JULY 2010